



2022

SUSQUEHANNA NUCLEAR, LLC (A DIVISION OF TALEN ENERGY)



**IMPORTANT
EMERGENCY
PREPAREDNESS
INFORMATION
INSIDE**



To our neighbors:

Talen Energy and every employee at the Susquehanna Station have the responsibility to operate the plant safely. For Team Susquehanna, public health and safety take precedence over all other factors in decisions about plant operations. It is this focus that enables the plant to generate reliable, carbon free energy for homes and businesses across the region.

The effective maintenance of our Emergency Preparedness Program is one of the ways we ensure public safety. Throughout the year, Team Susquehanna works with Local, County, State and Federal Emergency Management Agencies to test our equipment exercise our staff and demonstrate our ability to respond in the unlikely event of an emergency. To ensure you, our neighbors, have accurate information, Team Susquehanna has developed this brochure, which will help you better understand the various aspects of the Emergency Plan and be prepared to take appropriate protective actions.

Susquehanna recognizes that some of our neighbors may require special assistance and request you complete the 'attached card' and return to us at your earliest convenience. The card is self-addressed and does not require postage.

We ask that you keep the brochure in a convenient location and readily available for your use. It contains information and planning resources for any emergency situation. If you have any questions, please feel free to call the numbers provided and we'll be glad to answer them for you.

Sincerely,

Derek Jones, Plant Manager
Susquehanna Nuclear, LLC (a generating affiliate of Talen Energy)



What to do during an **Emergency**

1

Listen for a 3 minute steady tone siren sound

- Tune your radio to an Emergency Alert System (EAS) station for information.
- Do not evacuate unless directed by emergency personnel.

2

Turn on your radio or television

The following stations are a part of the Emergency Alert System:

Local Emergency Alert System (EAS)

Luzerne County			Columbia County		
AM	FM		Television	AM	FM
WILK 980	WBSX 97.9	WFUZ 92.1	WNEP 16	WHLM 930	WQSU 88.9
WAZL 1490	WRKC 88.5	WILK 103.1	WBRE 28	WKOK 1070	WQXK 94.1
WZMF 730	WKRZ 98.5	WMOX 102.3	WYLN 35	WBWX 1280	WPGM 96.7
WTK 1550	WRGN 88.1	WSJR 93.7	WYOU 22		WMMZ 103.5
WQFM 1240	WCLH 90.7	WSFX 89.1			WCFT 106.5
WKZN 1300	WMGS 92.9	WGGY 101.3			WILQ 105.1
WYCK 1340	WBHT 97.1	WWRR 104.9			WKSB 102.7
		WEZX 106.9			

- Listen to your radio or television and follow instructions.

3

During an evacuation, If children are in school

- Do not go to schools to pick up children.
- Listen to your radio or television and follow instructions for picking up your children.
- See school information in back of brochure.

4

Individuals with Access and Functional needs

If you will need help responding to an evacuation order, do the following:

- Fill out the Request for Special Assistance card and mail it today.
- Call your Emergency Management Office.
See contact information in the back of this brochure.

5

If asked to shelter in-place

- Stay in your home.
- Close all doors and windows. Turn off fans and air conditioners.
- Use the telephone only for an emergency.

6

If asked to evacuate

- You will have plenty of time to act in an emergency. **DO NOT HURRY!** You may get hurt by rushing.
- Refer to the evacuation route identified for your municipality located in the back of this brochure.
- Bring the items suggested in the back of this brochure.

7

Public inquiries

- For additional information refer to your County's Public Inquiry phone number identified in the back of this brochure under evacuation routes.



Emergency Information

Any emergency at the Susquehanna plant would fall into one of the following four categories, established by the U.S. Nuclear Regulatory Commission.

Notification of Unusual Event

Events are in process or have occurred which indicate a potential degradation of the level of safety of the plant or indicate a security threat to facility protection has been initiated. No releases of radioactive material requiring offsite response or monitoring are expected unless further degradation of safety systems occurs.

Alert

Events are in process or have occurred that involve an actual or potential substantial degradation of the level of safety of the plant or a security event that involves probable life-threatening risk to site personnel or damage to site equipment because of hostile action. Any releases are expected to be limited to small fractions of the U.S. Environmental Protection Agency Protective Action Guideline exposure levels.

Site Area Emergency

Events are in process or have occurred that involve:

- (a) actual or likely major failures of plant functions needed to protect the public, or;
- (b) hostile action that results in intentional damage or malicious acts:
 - (1) toward site personnel or equipment that could lead to the likely failure of, or;
 - (2) that prevent effective access to equipment needed to protect the public.

Any radioactive releases are not expected to result in exposure levels that exceed EPA Protective Action Guideline exposure levels beyond the site boundary.

General Emergency

Events are in process or have occurred that involve actual or imminent substantial core degradation or melting with potential for loss of containment integrity or hostile action that results in an actual loss of physical control of the facility. Radioactive releases can be reasonably expected to exceed EPA Protective Action Guideline exposure levels offsite for more than the immediate site area.

Siren Maintenance

To maintain a high level of siren system performance, periodic maintenance and testing may occur. Testing may result in a growl or short 10-second sound of the siren.



What You Should Do If the Sirens Sound

Please remember that sirens may sound to notify you of any emergency, including floods, chemical spills and severe storms. When you hear a siren, it does not necessarily mean a nuclear emergency.

1. **NOTIFICATION.** In an emergency requiring general public notification, county officials will sound sirens around the Susquehanna plant in a steady tone – **NOT** a rising and falling tone – for three minutes. The system can be used to notify the public of **ANY EMERGENCY**. The siren is not a signal to evacuate. It directs you to tune to an Emergency Alert System station for official information and instructions.
2. **YOUR RESPONSE.** Tune your radio or TV to a local Emergency Alert System station. Authorities will provide information about the emergency. They will direct you to take protective actions, if any are needed. **DO NOT** use the telephone to try to get emergency information. You may tie up phone lines urgently needed for emergency operations designed to protect you.
3. **SIREN PROBLEMS.** Occasionally, a siren may malfunction. If you hear a siren, but no emergency information is provided by the Emergency Alert System, call 570-542-1411. The siren will be repaired as quickly as possible. **DO NOT** call county rumor control or 911.



Procedures for **PROTECTIVE ACTIONS**

If asked to Shelter In-Place (SIP)

- Close outside doors and windows.
- Turn off fans and air conditioners.
These actions help keep out radioactive material.
- Keep pets inside and shelter farm animals, if possible.
- Keep your radio turned on and listen for emergency instructions.
- Keep telephone lines open for emergency use.
- Monitor and Prepare.

If you are traveling in a motor vehicle

- Close windows and air vents.

If you are not at home

- Take the best available shelter.
- Instructions will be given on the radio.
- Stay inside until you are told it is safe to go out.

If asked to evacuate

- Close and lock all doors and windows.
- Shut off appliances and faucets.
- Bring the suggested items with you (listed under "Items to take").
- Be sure your neighbors know what to do.
- Close car windows and vents.
- Tune to an EAS radio station and follow instructions from officials.
- Go to the Reception Centers identified in this brochure.

POTASSIUM IODIDE (KI)

During an evacuation, state officials may recommend that you take Potassium Iodide (KI) as an additional protective action. State and local officials will announce when the public should take KI in Emergency Alert System messages. Residents living within the 10-mile radius may obtain KI or more information by contacting the Pennsylvania Department of Health at 1-877-PA-HEALTH or www.health.pa.gov.

KI offers a degree of cancer protection only to the thyroid gland and only in cases when the release contains radioactive iodine. If taken shortly before a radiological exposure, potassium iodide blocks the thyroid gland's ability to absorb radioactive iodine. Its use would be in addition to evacuation and shelter in-place. Evacuation and shelter in-place are the primary modes of protection in a radiological emergency. The use of KI is entirely voluntary.

Items to take

If you are asked to evacuate in an emergency, you should plan to be away for at least three days. Listed below are some items you may want to take:

- Cash/checkbook, identification/license, credit cards, keys, flashlight, portable radio, batteries and folding chairs.
- Extra clothing and footwear.
- Two blankets per person or sleeping bags and pillows.
- Prescriptions/medications, glasses, dentures and diet needs.
- Towels, toiletries and sanitary supplies.
- Baby formula, diapers and favorite toys.

Radiological information for Farmers

Farmers should keep a supply of covered feed and water, and determine where they would shelter animals in an emergency. Farmers will be allowed back into evacuated areas, supervised by county agricultural agents, for livestock care. Farmers can get information by calling 570-784-6660 in Columbia County, 570-820-4455 in Luzerne County or their U.S. Dept. of Agriculture representative.



Caution: Potassium Iodide should not be used by people allergic to iodine. In the event of an allergic reaction, contact a physician immediately or 911.

Student Pickup Points

STUDENTS FROM

HOST SCHOOL

*Benton Area School District*¹

Students remain at school

Berwick Area School District

Berwick Senior High
Berwick Middle School
Nescopeck Elementary
Salem Elementary
St. Joseph's Holy Family
Columbia Day Care
New Story
West Berwick Elementary

Danville Senior High
Danville Middle School
Danville Primary School
Liberty Valley Elementary
Liberty Valley Elementary
Liberty Valley Elementary
Liberty Valley Elementary
Danville Primary School

Bloomsburg Area School District

Bloomsburg High School¹
Beaver-Main Elementary²
Bloomsburg Middle School¹

Students remain at school
Students remain at school
Students remain at school

*Central Columbia School District*⁵

Students remain at school

*Columbia/Montour Vo-Tech*⁴

Students remain at school

Crestwood Area School District

Crestwood High School¹
Rice Elementary^{1,3}

Students remain at school
Students remain at school

Hazleton Area School District

Drums Elementary
Valley Elementary
Academy of Sciences
Hazleton High School¹
Hazleton Career School¹

Freeland Elem/Middle School
McAdoo-Kelayres School
Hazleton High School
Students remain at school
Students remain at school

Nanticoke Area School District

Hanover Area Senior High

Northwest Area School District

Dallas Middle School

*West Side Vo-Tech*¹

Students remain at school

*Wilkes-Barre Vo-Tech*¹

Students remain at school

School Information

If your children attend school within an evacuation area, your natural inclination might be to go there. **PLEASE DON'T**— it could cause confusion as well as traffic congestion. School children will be transported to host schools located near the major evacuation routes leading to the reception centers. **The most effective way of meeting your children is to drive to the host school listed below. Bring your identification with you to the host school.**

If your children attend school outside the evacuation area, they will not be sent home. They will be cared for at their school or a designated host school until they are picked up by a parent or guardian.

Notes for Student Pickup Points

- 1 For students who live inside, but whose school is located outside, the Emergency Planning Zone.
- 2 Students remaining more than one hour after the school has evacuated will be taken to Bloomsburg High School.
- 3 After 3:30 p.m. students will be transported to Crestwood High School.
- 4 Students who reside inside the Emergency Planning Zone (EPZ) and whose home school is inside the EPZ will be retained at CMVT until buses become available to transport to the Danville High School. Students who reside inside the EPZ and whose home school is outside the EPZ will be transported back to their home school.
- 5 For students who live inside, but whose school is located outside, the Emergency Planning Zone. These students will be picked up at the Elementary School Gymnasium.





Evacuation Routes to Reception Centers

Phone numbers below are for the municipalities emergency operation centers that coordinate local evacuation efforts

COLUMBIA COUNTY

Beaver Township* (570-784-7195)

Take local routes to State Route 339. Go south on State Route 339. Go west on State Route 54, turn left onto South "D" Street, go 3 blocks and turn right onto West Mahanoy Street and proceed west to **Mahanoy Area School Complex, 1 Golden Bear Drive, Mahanoy City, PA.**

Berwick/ Briar Creek Borough (570-752-6020)

Take local routes to I-80 W, merge onto I-180 W via Exit 212A-B toward Williamsport, take Exit 20, turn left onto Fairfield Rd., turn right onto BrushyRidge Rd., turn right onto Fairview Dr., take the 2nd left onto Willow St., **McCall Middle School, 600 Willow Street, Montoursville, PA.**

Briar Creek Township (570-752-5390)

80 to Exit 224 Route 54. East on 54 to Route 487. Right on to Route 487 to Route 61 approximately 3 miles to traffic light (487 and 61). Left on 61 South, approximately 5 miles. Right onto Second Street at the Bridge. Second Street to the traffic light at 2nd and Walnut, right onto Walnut. Follow Walnut to the end to Woodlawn Street, at the stop sign turn left to Lynn one block. At the stop sign turn right onto Lynn, you will come to another stop sign, go straight two blocks (Lynn will become Park Ave.) to Jackson Street. At the stop sign turn left on Jackson Street, merge to the right onto Indian Ave and follow the road to the top towards State Street. Parking is on the left and the High School is on the right. **Shamokin Area High School, 2000 W. State Street, Coal Township, PA.**

Fishing Creek Township* (570-683-6033)

Take local routes to I-80 W, merge onto I-180 W via Exit 212A-B toward Williamsport, take Exit 20, turn left onto Fairfield Rd., turn right onto BrushyRidge Rd., turn right onto Fairview Dr., take the 2nd left onto Willow St., **McCall Middle School, 600 Willow Street, Montoursville, PA.**

Mifflin Township* (570-752-4651)

Take local routes to the Mifflinville entrance of Interstate 80. Go west on Interstate 80 to Exit 212A (Milton). South on Route 147 to Route 45. West on Route 45 to **Montandon Elementary School, 2733 State Rte. 45, Montandon, PA.**

North Centre Township* (570-759-2733)

80 to Exit 224 Route 54. East on 54 to Route 487. Right on to Route 487 to Route 61 approximately 3 miles to traffic light (487 and 61). Left on 61 South, approximately 5 miles. Right onto Second Street at the Bridge. Second Street to the traffic light at 2nd and Walnut, right onto Walnut. Follow Walnut to the end to Woodlawn Street, at the stop sign turn left to Lynn one block. At the stop sign turn right onto Lynn, you will come to another stop sign, go straight two blocks (Lynn will become Park Ave.) to Jackson Street. At the Stop sign turn left on Jackson Street, merge to the right Indian Ave and follow the road to the top towards State Street. Parking is on the left and the High School is on the right. **Shamokin Area High School, 2000 W. State Street, Coal Township, PA.**

South Centre Township* (570-784-8552)

Take local routes to Interstate 80, west on Interstate 80 to Exit 212A (Milton). South on Route 147 to Route 45. West on Route 45 to **Montandon Elementary School, 2733 State Rte. 45, Montandon, PA.**

LUZERNE COUNTY

Black Creek Township (570-384-3518)

Take local routes to State Route 924, south on State Route 924 to State Route 339. Go south on State Route 339. Go west on State Route 54, turn left onto South "D" Street, go 3 blocks and turn right onto West Mahanoy Street and proceed west to **Mahanoy Area School Complex, 1 Golden Bear Drive, Mahanoy City, PA.**

Butler Township* (570-788-3547)

Take local routes to Interstate 81, south on Interstate 81 to Exit 131 B. Go west on State Route 54, turn left onto South "D" Street, go 3 blocks and turn right onto West Mahanoy Street and proceed west to **Mahanoy Area School Complex, 1 Golden Bear Drive, Mahanoy City, PA.**

Conyngam Borough (570-788-3547)

Take local routes to State Route 93, south on State Route 93 to Interstate 81, south on Interstate 81 to Exit 131 B. Go west on State Route 54, turn left onto South "D" Street, go 3 blocks and turn right onto West Mahanoy Street and proceed west to **Mahanoy Area School Complex, 1 Golden Bear Drive, Mahanoy City, PA.**

Conyngam Township (570-542-2411)

Take local routes or PA-29 South to Interstate 81 North, North on Interstate 81 to Exit 188, to Route 347, North on Route 347, turn right onto Sanderson St., Bear left onto Underwood Rd. School is on the left. **Mid Valley Secondary Center, 52 Underwood Rd., Throop, PA.**

PUBLIC INQUIRY: COLUMBIA COUNTY — (570) 389-5738, (570) 784-6300 TDD; LUZERNE COUNTY — (800) 821-3716

**Municipalities with an asterisk are partially located in the potential evacuation area. See the map included with this information.*



Evacuation Routes to Reception Centers

Phone numbers below are for the municipalities emergency operation centers that coordinate local evacuation efforts

LUZERNE COUNTY (continued)

Dorrance Township (570-868-6394)

Take local routes to Interstate 81 North, North on Interstate 81 to Exit 188 to Route 347, North on Route 347, turn right onto Sanderson St., Bear left onto Underwood Rd. School is on the left. ***Mid Valley Secondary Center, 52 Underwood Rd., Throop, PA.***

Hollenback Township (570-379-2535)

Take local routes to State Route 93, south on State Route 93 to Interstate 80, west on Interstate 80 to Exit 212A (Milton). South on Route 147 to Route 45. West on Route 45 to ***Montandon Elementary School, 2733 State Rte. 45, Montandon, PA.***

Hunlock Township* (570-256-7410)

Take local routes to State Route 118, east on State Route 118 to State Route 29, north on State Route 29 to U.S. Route 6, west on U.S. Route 6 to ***Tunkhannock High School, 135 Tioga St., Tunkhannock, PA.***

Huntington Township/New Columbus Borough (570-864-2547)

Take local routes to State Route 118, east on State Route 118 to State Route 29, north on State Route 29 to U.S. Route 6, west on U.S. Route 6 to ***Tunkhannock High School, 135 Tioga St., Tunkhannock, PA.***

City of Nanticoke (570-735-5860)

Take local routes or PA-29 South to Interstate 81 North, North on Interstate 81 to Exit 188, to Route 347, North on Route 347, turn right onto Sanderson St., Bear left onto Underwood Rd. School is on the left. ***Mid Valley Secondary Center, 52 Underwood Rd., Throop, PA.***

Nescopeck Borough (570-752-5461)

Take State Route 339 south to Interstate 80, west on Interstate 80 to Exit 212A (Milton). South on Route 147 to Route 45. West on Route 45 to ***Montandon Elementary School, 2733 State Rte. 45, Montandon, PA.***

Nescopeck Township (570-379-2769)

Take local routes to Interstate 80 west to Exit 212A (Milton). South on Route 147 to Route 45. West on Route 45 to ***Montandon Elementary School, 2733 State Rte. 45, Montandon, PA.***

New Columbus Borough (570-864-2547)

Take local routes to State Route 118, east on State Route 118 to State Route 29, north on State Route 29 to U.S. Route 6, west on U.S. Route 6 to ***Tunkhannock High School, 135 Tioga St., Tunkhannock, PA.***

Newport Township (570-733-2032)

Take local routes or PA-29 South to Interstate 81 North, North on Interstate 81 to Exit 188, to Route 347, North on Route 347, turn right onto Sanderson St., Bear left onto Underwood Rd. School is on the left. ***Mid Valley Secondary Center, 52 Underwood Rd., Throop, PA.***

Nuangola Borough (570-868-5808)

Take local routes to Interstate 81 North, North on Interstate 81 to Exit 188, to Route 347, North on Route 347, turn right onto Sanderson St., Bear left onto Underwood Rd. School is on the left. ***Mid Valley Secondary Center, 52 Underwood Rd., Throop, PA.***

Salem Township (570-752-5377)

Take local routes west or U.S. Route 11 south to Interstate 80, west on Interstate 80 to Exit 212A (Milton). South on Route 147 to Route 45. West on Route 45 to ***Montandon Elementary School, 2733 State Rte. 45, Montandon, PA.***

Shickshinny Borough (570-542-2178)

Take local routes to State Route 118, east on State Route 118 to State Route 29, north on State Route 29 to U.S. Route 6, west on U.S. Route 6 to ***Tunkhannock High School, 135 Tiger St., Tunkhannock, PA.***

Slocum Township (570-868-6255)

Take local routes to Interstate 81 North, North on Interstate 81 to Exit 188, to Route 347, North on Route 347, turn right onto Sanderson St., Bear left onto Underwood Rd. School is on the left. ***Mid Valley Secondary Center, 52 Underwood Rd., Throop, PA.***

Sugarloaf Township (570-708-3066)

Take local routes to State Route 93, south on State Route 93 to Interstate 81, south on Interstate 81 to Exit 131 B. Go west on State Route 54, turn left onto South "D" Street, go 3 blocks and turn right onto West Mahanoy Street and proceed west to ***Mahanoy Area School Complex, 1 Golden Bear Drive, Mahanoy City, PA.***

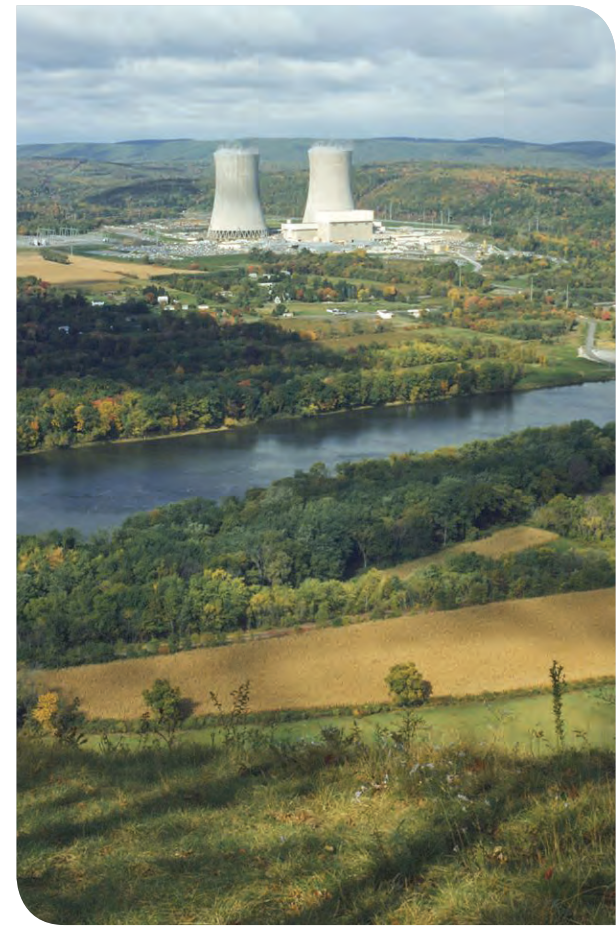
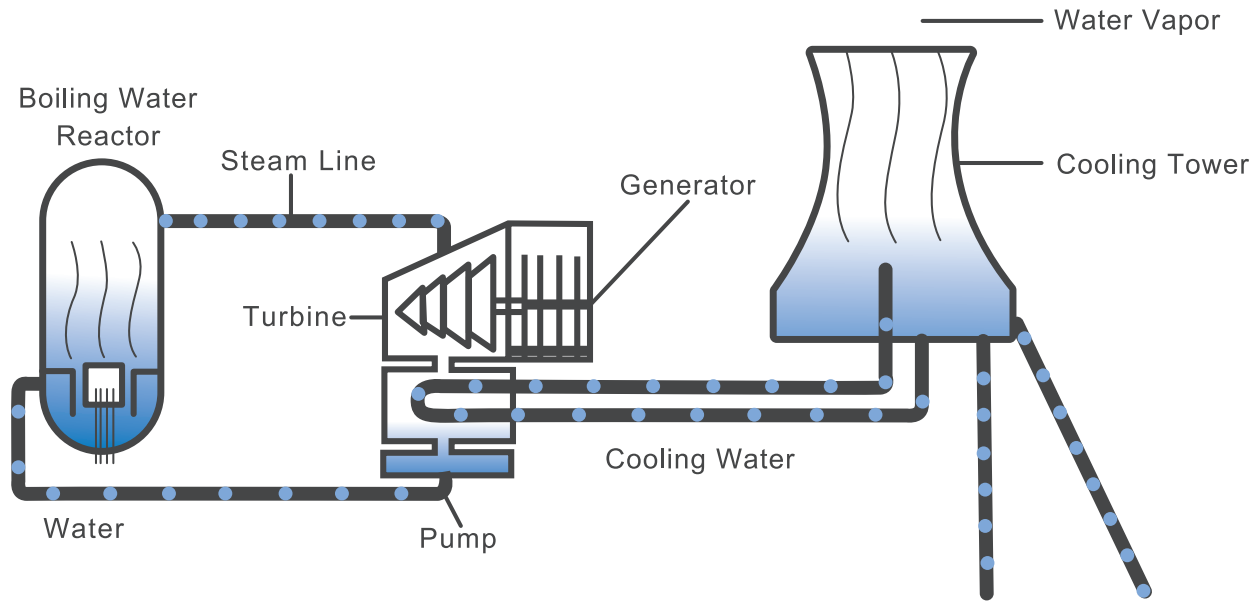
Union Township (570-256-7600)

Take local routes to State Route 118, east on State Route 118 to State Route 29, north on State Route 29 to U.S. Route 6, west on U.S. Route 6 to ***Tunkhannock High School, 135 Tiger St., Tunkhannock, PA.***

Susquehanna Nuclear Power Plant

Boiling Water Reactor

Nuclear Plant



Radiation

Radiation is energy. It includes such energy forms as heat, light, radio waves and radioactive rays and particles. Radiation comes from cosmic sources and from the natural elements that make up our planet. It is in the building materials of our homes; it is even in our bodies. These natural forms of radiation are part of what we call "background" radiation.

There is also man-made radiation, produced by sources such as medical and dental procedures and X-rays, television sets, microwave ovens and electric power plants.

The three main types of radiation are alpha, beta and gamma. Alpha particles are the least penetrating and can be stopped by a sheet of paper. Beta particles can be shielded by a thin sheet of metal. Gamma radiation is the most penetrating form of radiation. It can be blocked, however, by about three feet of concrete or a denser material such as lead.

Radiation's effect on the human body is measured in units called millirems.

The average background radiation in the area around the Susquehanna plant is about 300 millirems each year. The nuclear plant adds less than one-tenth of a millirem annually. Following the directions provided by Emergency Personnel during an emergency will limit your exposure to radiation.

Pre-Emergency Checklist

Contact Your Local Emergency Management Agency or the American Red Cross

- Learn your community's evacuation routes.
- Ask about special assistance for elderly or disabled persons.
- Ask your workplace about emergency plans.
- Learn about emergency plans for your children's school or day care center.
- Ask about animal care after a disaster. Animals may not be allowed inside emergency shelters due to health regulations.

Create an Emergency Plan

- Meet with household members to discuss the dangers of fire, severe weather, earthquakes and other emergencies. Explain how to respond to each.
- Find the safe spots in your home for each type of disaster.
- Discuss what to do about power outages and personal injuries.
- Draw a floor plan of your home. Mark two escape routes from each room.
- Show family members how to turn off the water, gas and electricity main switches when necessary.
- Post emergency telephone numbers near telephones.
- Teach children how and when to call 9-1-1, police and fire.
- Instruct household members to turn on the radio for emergency information.
- Pick one out-of-state and one local friend or relative for family members to call if separated during a disaster (it is often easier to call out-of-state than within the affected area).
- Teach children your out-of-state contact's phone numbers.
- Pick two emergency meeting places:
 - 1) A place near your home in case of a fire.
 - 2) A place outside your neighborhood in case you cannot return home after a disaster.
- Take a basic first aid and CPR class.
- Keep family records in a water and fire-proof container.



Emergency Checklist

Prepare a Disaster Supplies Kit

Assemble supplies you might need in an evacuation. Store them in an easy-to-carry container such as a backpack or duffel bag.

Include:

- A supply of water (one gallon per person per day).
Store water in sealed, unbreakable containers.
Identify the storage date and replace every six months.
- A supply of non-perishable packaged or canned food and a non-electric can opener.
- A change of clothing, rain gear and sturdy shoes.
- Blankets or sleeping bags.
- A first aid kit and prescription medications.
- An extra pair of glasses.
- A battery-powered radio, flashlight and plenty of extra batteries.
- Credit cards and cash.
- An extra set of car keys.
- A list of family physicians.
- A list of important family information; the style and serial number of medical devices such as pacemakers.
- Special items for infants, elderly or disabled family members.

If You Need to Evacuate, Remember to...

- Confine or secure your pets.
- Call your family contact – do not use the telephone again unless it is a life-threatening emergency.
- Check on your neighbors, especially elderly or disabled persons.
- Make sure you have an adequate water supply in case service is cut off.
- Stay away from downed power lines.

My Emergency Response Plan

Please fill in the blanks now. This will save you time if there is an emergency.

My *evacuation route* is: _____

My *reception center* is: _____

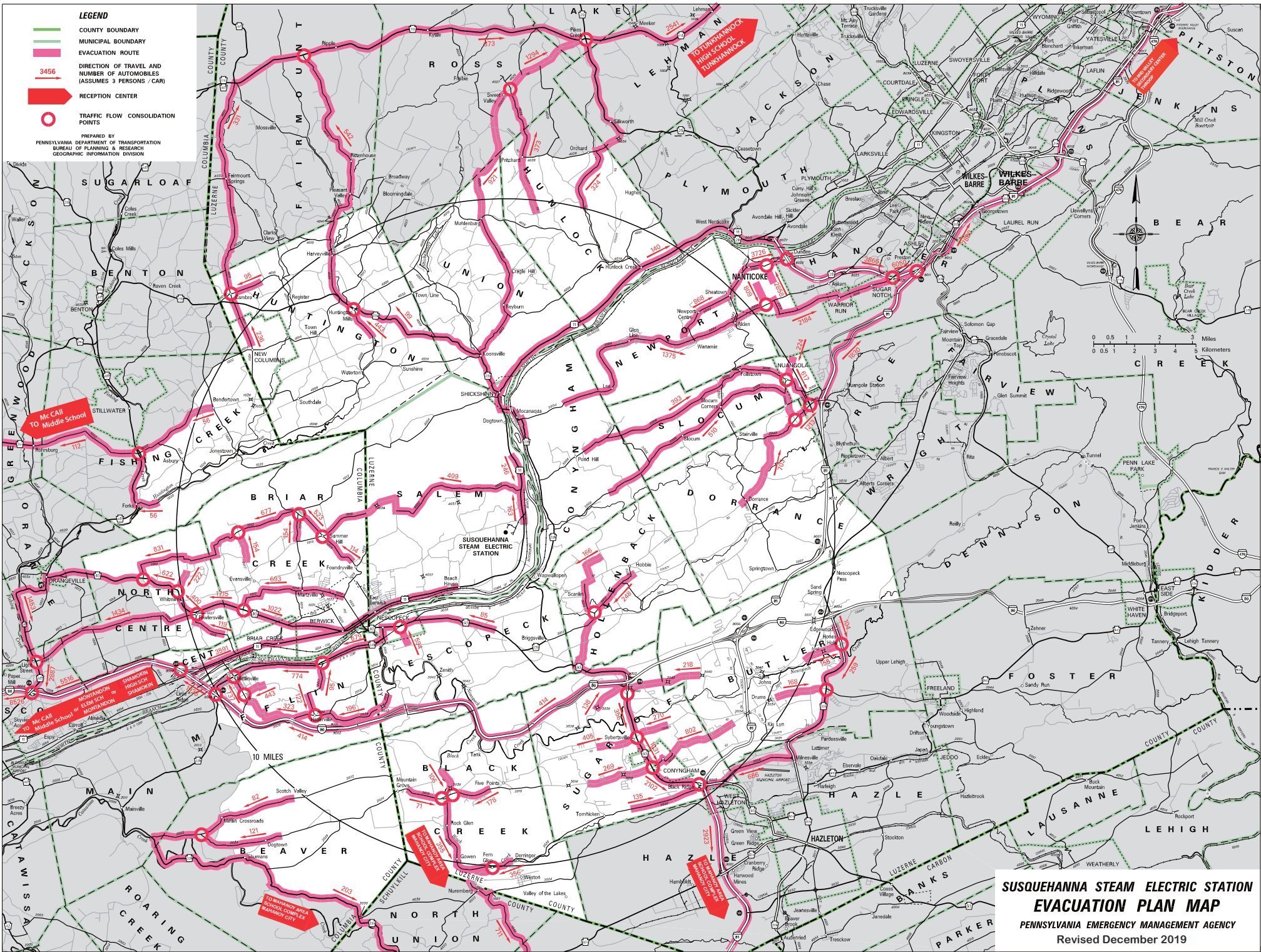
Host school(s) for my children: _____

If I need a ride, my *Municipal Emergency Management phone number* is: _____

The phone number of my county emergency management agency is: _____

Luzerne County: 800-821-3716

Columbia County: 570-389-5720 or 570-784-6300 TDD





NO POSTAGE
NECESSARY
IF MAILED
IN THE
UNITED STATES



BUSINESS REPLY MAIL
FIRST-CLASS MAIL PERMIT NO. 1001 BERWICK, PA

POSTAGE WILL BE PAID BY ADDRESSEE

ATTN: JESSICA SHOUP
SUSQUEHANNA NUCLEAR LLC
NUCLEAR EMERGENCY PLANNING
634 SALEM BLVD
BERWICK PA 18603-6828





FOLD IN HALF AND SEAL

Request for Special Assistance

If you have a disability or special/functional need that will require assistance during an emergency evacuation, please fill out and return this card. Provisions have been made to provide transportation to those who need it, but it is very important those needs are identified before the emergency. Local authorities will keep this information confidential. This card should be completed annually.

Transportation

- Do not drive or have friends/family that can drive you
- Cannot walk – requires a wheelchair
- Bedridden or medical equipment not easily transported
- Use cane or walker
- Ambulance
- Other (explain in comments)

Special/Functional Needs

- Hearing impaired
- Visually impaired
- Speech impediment
- Use service animal
- Oxygen dependent
- Life support dependent
- Cognitive/Memory impairment
- Other (explain in comments)

Comments: _____

Contact Information for Person Needing Assistance (please print)

Name: _____
Street Address: _____
City: _____ State: _____ Zip: _____
*Municipality: _____ County: _____
Telephone: Home _____ Cell _____

Emergency Contact (1): _____
Name: _____
Telephone: Home _____ Work _____ Cell _____

Person completing form if different than listed above:
Name: _____
Phone: _____

*Required Information

2022

Any questions please email Jessica.Shoup@TalenEnergy.com

Even if you have mailed a Special Assistance Card in the past, it is very important to mail one every year so we have the most updated information about your needs. Local authorities will keep this information confidential.